

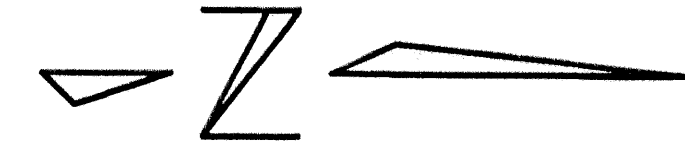
BALLENISLES SOUTHWEST AREA

A PARCEL OF LAND LYING IN THE EAST ONE HALF OF SECTIONS 10 and 15, TOWNSHIP 42 SOUTH, RANGE 42 EAST, and THE SOUTHWEST ONE QUARTER OF SECTION 14, TOWNSHIP 42 SOUTH, RANGE 42 EAST,

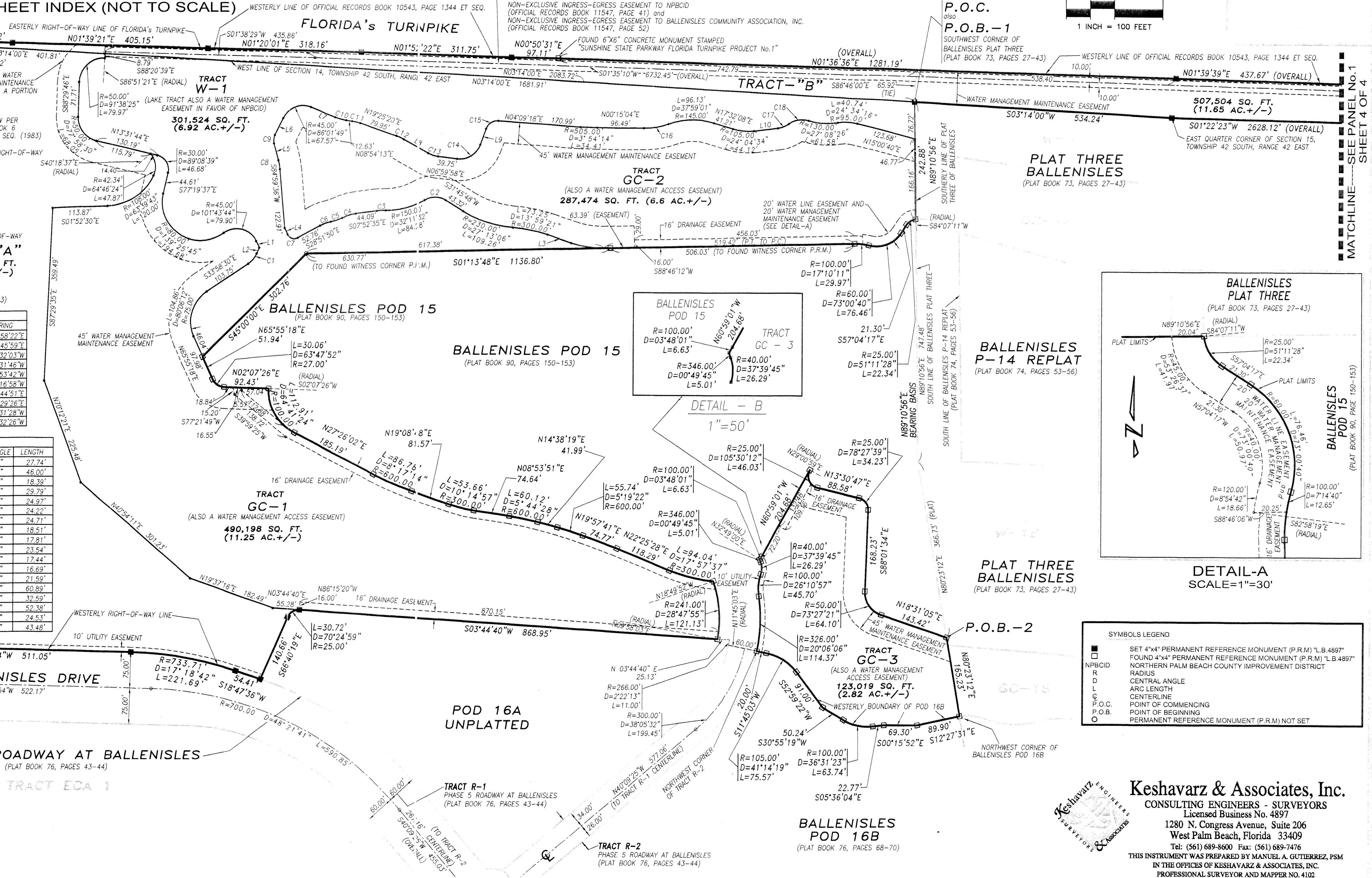
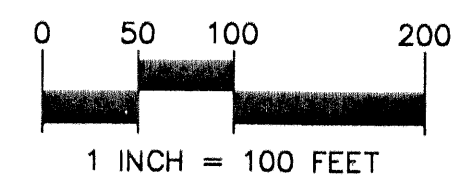
CITY OF PALM BEACH GARDENS,
PALM BEACH COUNTY, FLORIDA
SHEET 3 OF 4 APRIL 2002

PANEL 1 SHEET 4 OF 4
PANEL 2 SHEET 4 OF 4
PANEL 3 SHEET 4 OF 4
PANEL 4 SHEET 4 OF 4

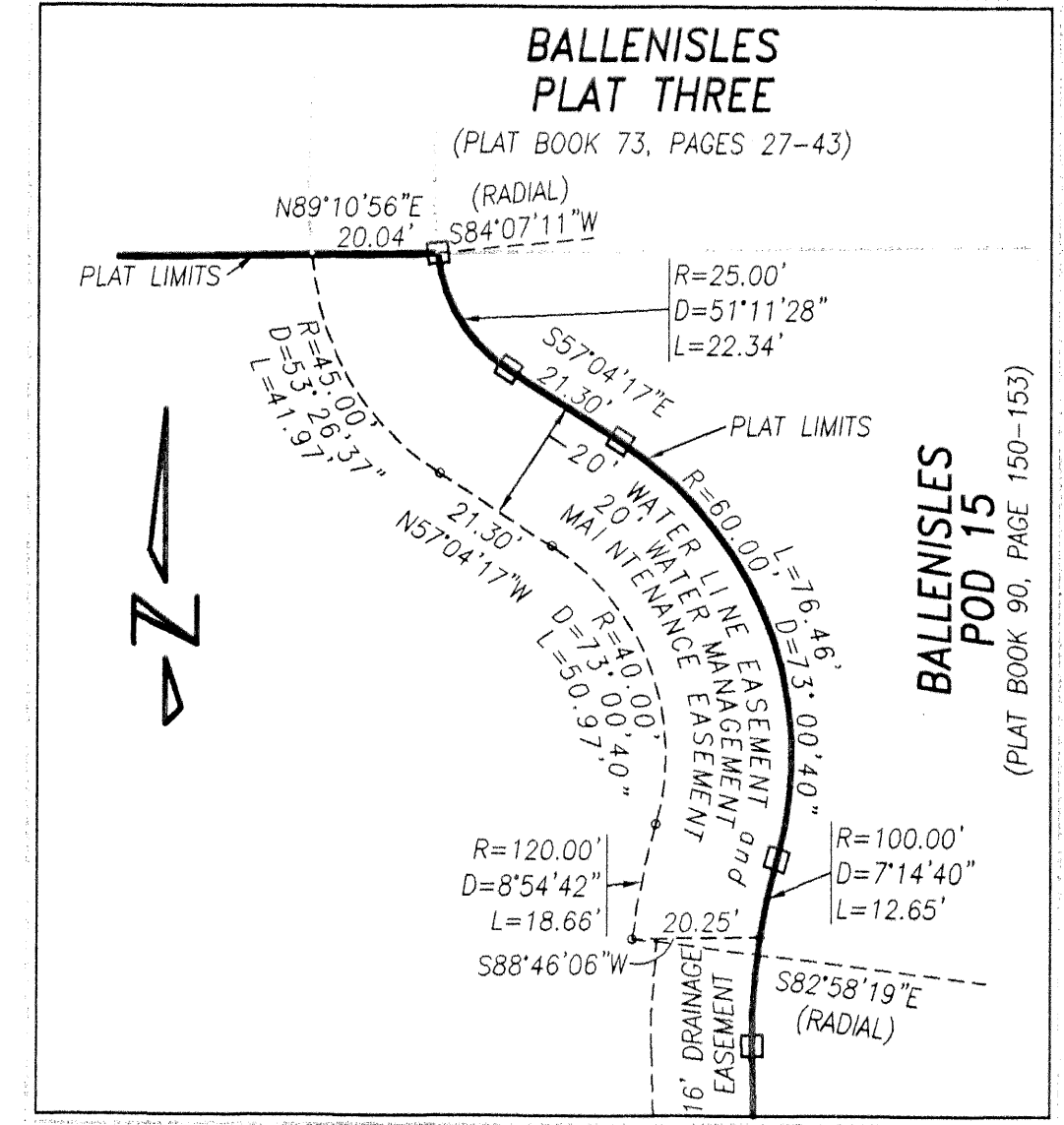
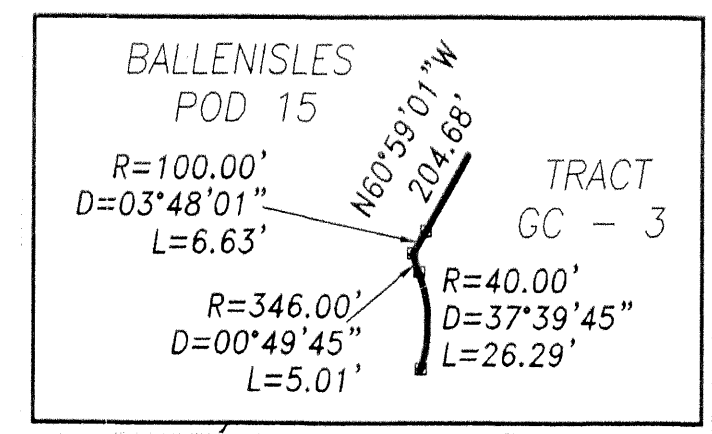
SHEET INDEX (NOT TO SCALE)



GRAPHIC SCALE

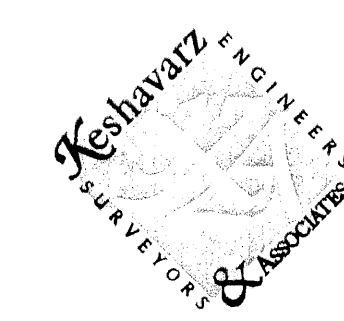


| ANGLE | LENGTH |
|--------|--------|
| 27.74' | |
| 46.00' | |
| 18.39' | |
| 29.79' | |
| 24.97' | |
| 24.22' | |
| 24.71' | |
| 18.51' | |
| 17.81' | |
| 23.54' | |
| 17.44' | |
| 16.69' | |
| 21.59' | |
| 60.89' | |
| 32.59' | |
| 52.38' | |
| 24.53' | |
| 43.48' | |



SYMBOLS LEGEND

- SET 4"x4" PERMANENT REFERENCE MONUMENT (P.R.M.) "L.B. 4897"
- FOUND 4"x4" PERMANENT REFERENCE MONUMENT (P.R.M.) "L.B. 4897"
- NPBCID NORTHERN PALM BEACH COUNTY IMPROVEMENT DISTRICT
- R RADIUS
- D CENTRAL ANGLE
- L ARC LENGTH
- ☉ CENTERLINE
- P.O.C. POINT OF COMMENCING
- P.O.B. POINT OF BEGINNING
- PERMANENT REFERENCE MONUMENT (P.R.M.) NOT SET



Keshavarz & Associates, Inc.
 CONSULTING ENGINEERS - SURVEYORS
 Licensed Business No. 4897
 1280 N. Congress Avenue, Suite 206
 West Palm Beach, Florida 33409
 Tel: (561) 689-8600 Fax: (561) 689-7476
 THIS INSTRUMENT WAS PREPARED BY MANUEL A. GUTIERREZ, PSM
 IN THE OFFICES OF KESHAVARZ & ASSOCIATES, INC.
 PROFESSIONAL SURVEYOR AND MAPPER NO. 4102